



www.cuttingedgehomes.net

CUTTING EDGE HOMES

Artistic Rendering by California Coast Residential Design

Options
Shown

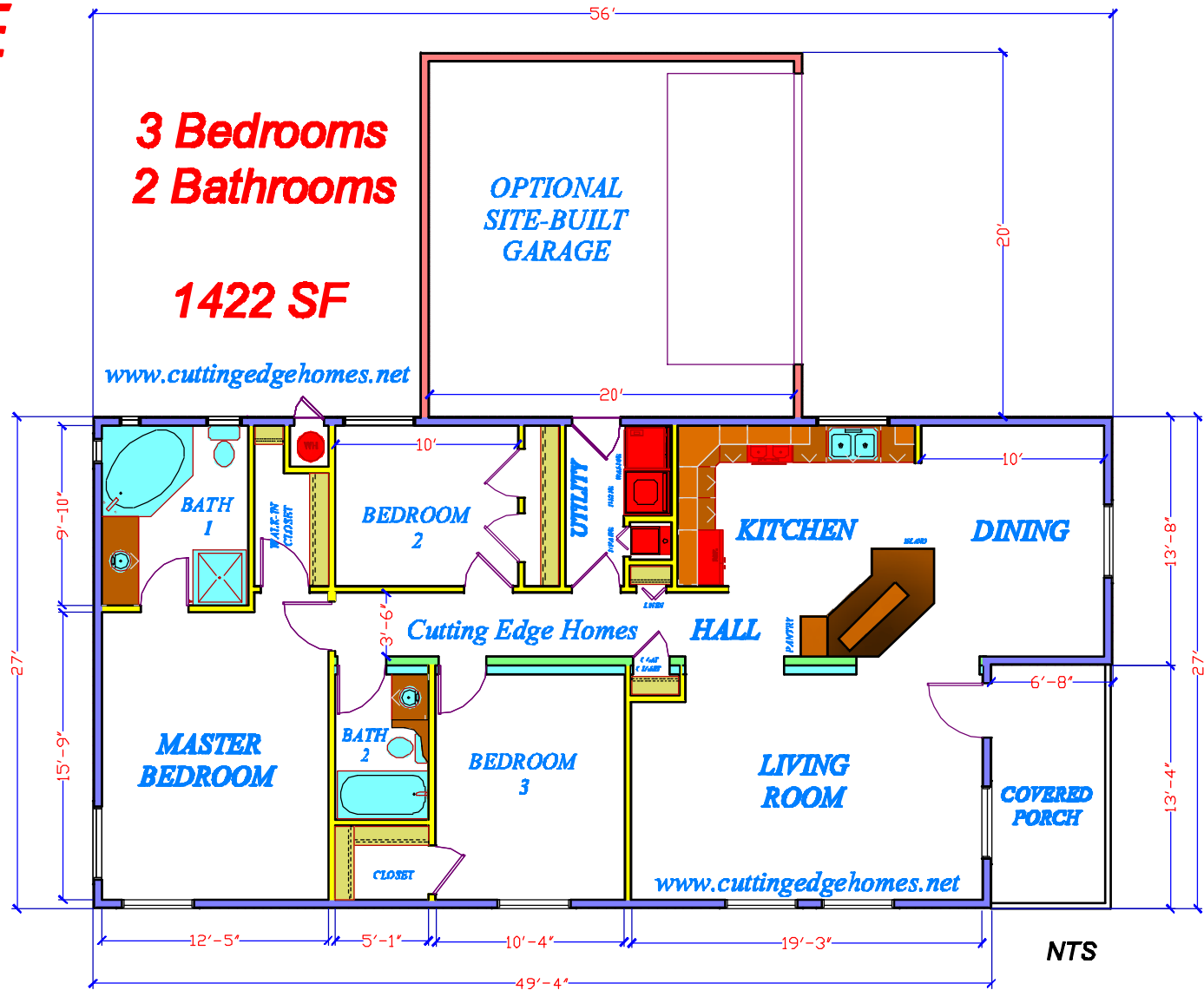
SKYLINE

THE CHEYENNE

3 Bedrooms
2 Bathrooms

1422 SF

www.cuttingedgehomes.net



ARTISTIC RENDERING PROPERTY OF CUTTING EDGE HOMES, INC.

Subject To Change Without Notice

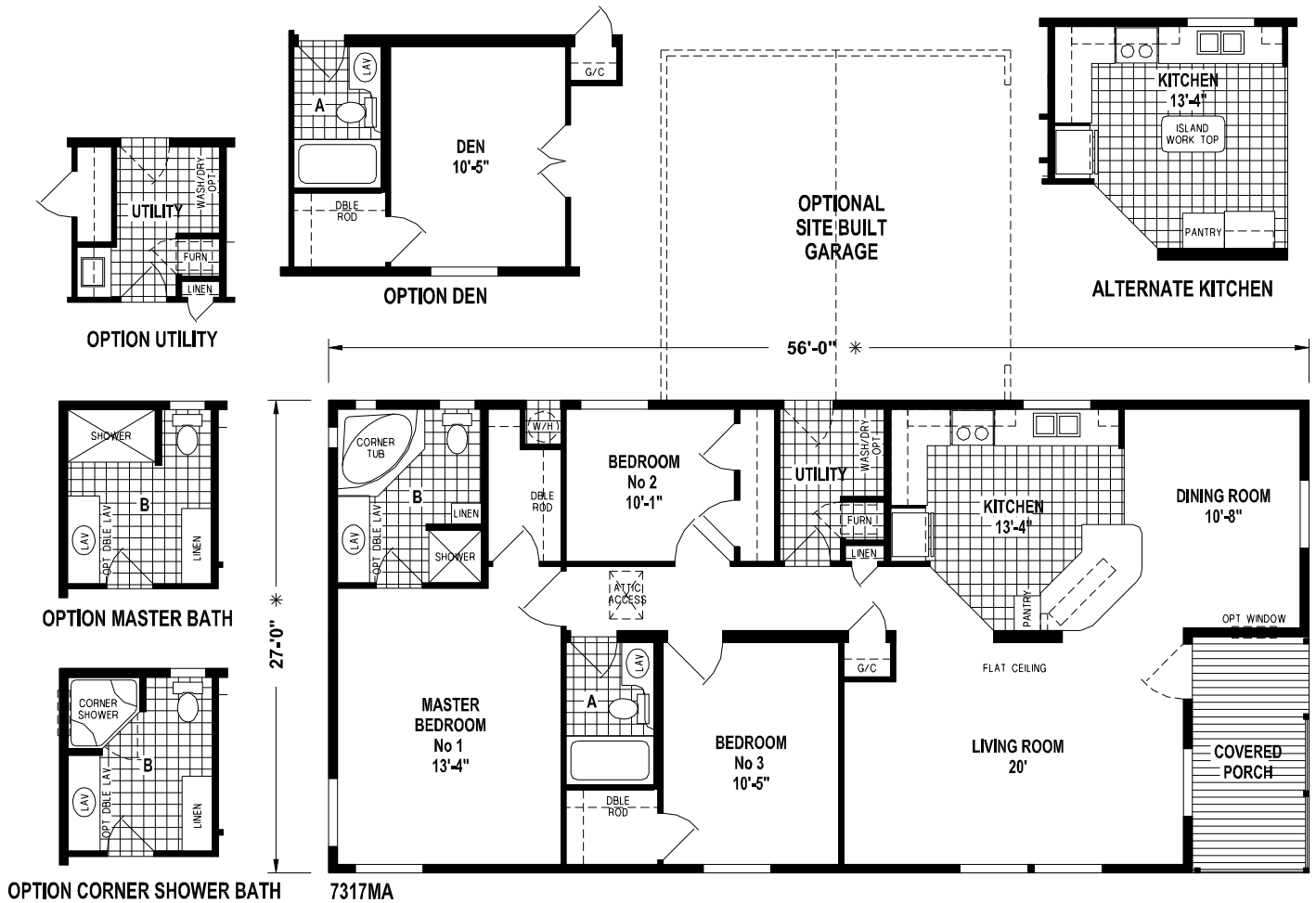
Artistic Rendering by California Coast Residential Design

Options Shown



The Cheyenne

3 Bedroom — 2 Baths — 1,422 Sq. Ft.



Lexington

28/32 Series

Standard Features

EXTERIOR

- 30 Year Architectural Shingles
- Fiber-Cement Siding
- 3/8 OSB Siding Underlayment
- Horizontal Lap at Garage Side
- 6-Panel Steel Front Door w/Deadbolt, Knocker & Viewer
- In-Swing Steel Rear Fire Door
- 2x6 Exterior Walls
- Rough Sawn Window Trim
- 10' Accent Dormer — Per Floor Plan
- Garage Dormer — Per Floor Plan
- Lights at Exterior Doors
- 9' Sidewall Height
- 5/12 Roof Pitch at 28'w
- 4/12 Roof Pitch at 32'w
- 30# Roof Load
- Flat Ceilings Throughout
- Insulated Vinyl Windows w/Low 'E' Glass
- Heat Zone II Standard: R-19 Walls, R-22 Floor, R-22 Ceiling. (The Higher The "R" Value, the Greater the Insulating Power).

INTERIOR

- 1/2" Finished Drywall Throughout
- Painted Textured Ceilings Throughout
- Rocker-Type Wall Switches
- Radius Corner Bead (Except Windows)
- Valance w/Mini Blinds Throughout
- Carpet w/Pad
- Hollow-Core Wardrobe Doors per Floor Plan
- Ventilated Wire Shelving in Wardrobes
- Dining Room Chandelier
- Heat Registers in Toe Kicks (Kitchen & Baths)
- Attic access w/Pull Chain Light in Attic
- 2x10 Floor Joists, 16" O.C. (Double 2x10 at Perimeter)
- 2x12 Floor Center Beam
- 5/8 Tongue & Groove Plywood Floor Decking
- Raised Panel Oak Cabinet Doors w/Residential Hidden Hinges
- Solid Oak Cabinet Fronts
- Lever Latch Door Handles

KITCHEN

- 16 Cu. Ft. Double Door Frost Free Refrigerator w/Overhead Cabinet Above
- 30" Gas Range w/Lighted Power Hood
- Stainless Steel Sink
- 4" Backsplash on Counter Top
- Crown Molding Over Cabinets w/Adjustable Shelves
- Lined Overhead Cabinets
- Vinyl Flooring
- Drawer Over Door Cabinet Construction

BATHROOMS

- 1.6 Gallon Low-Flow Toilet
- 60" Fiberglass Tub/Shower Combo - Both Baths
- China Sink w/Overflow & Pop-Up Drain
- Residential Raised Lav Base in Master Bath
- Elongated China Commodes
- Protective Backsplash
- Beveled Mirrored Medicine Cabinet
- Mirror & Light Strip Over Lav
- Exhaust Fan/Light Combination
- Banjo Lav Top in Hall Bath
- Drawer Bank in Master Bath
- Linen in Master Bath per Floor Plan
- Medicine Cabinet

UTILITY

- 200 AMP Electrical Service w/Meter Base
- 40 Gal. Water Heater
- Coleman Magnum Furnace w/Electric Ignition
- Deluxe Blend Air Ventilation System
- Water Shut-off Valves Throughout
- Water Hammer at Kitchen Sink & Washer
- Plumb for Washer
- Plumb for Gas Dryer or Wire for Electric Dryer
- Wire for Freezer
- Smoke Detector w/Battery Backup & False Alarm Control

HILLCREST
HOMES by **SKYLINE**

For your comfort and safety, Skyline home designs are approved and inspected for conformance to State Codes.

* Dimensions stated to industry standards. Width and length dimensions are nominal and are not to be used for setup of home on site; consult selling retailers for exact specifications. Overall length does not include approximately four foot hitch. The square footage is approximate and based upon nominal exterior floor size. Room sizes are measured from floor ends and wall centers.

Because of progressive product improvement, all prices & specifications are subject to change without prior notice or obligation to Skyline Corporation.

Your Retailer, an independent contractor, who is not an agent of Skyline Corporation, is the party responsible for your purchase contract and any additions, deletions, alterations, or attachments made to or in your home.